



rea

Confidence in posture solutions

rea | **Dahlia**[®]

The new highly manoeuvrable
and compact manual
wheelchair

Trusted Solutions,
Passionate People



The *Invacare Rea Dahlia* has it all, in a slim, modern design, tilt options and easy adjustability. For those seeking mobility with comfort, and pressure relief, this versatile chair is perfect for passive and active clients.

The **Dahlia** features two tilt angles of either 30° or 45°, which improves the positioning capabilities as the tilt and recline options reduce pressure. Component Cross-Compatibility (CCC) across product families available, including the **Flex3** seating.



Weight shifting with ease

The 45° option provides greater tilt possibilities, delivering excellent pressure relieving properties, which support the client's most vulnerable areas. The unique construction of the tilt mechanism makes it light to adjust, requiring little muscle force.

An ideal chair for foot propelling

The 30° tilt option is suitable for more able clients who can readily propel themselves. The seat height can be as low as 32.5 cm, allowing the possibility to foot propel. Using the self tilt version, clients can actively change posture at will, quite easily.

Benefits for both Dahlia 30° and 45°:

- Easy to manoeuvre - rear wheels close to body for light pushing
- Small overall width - Narrow footprint
- Easy to turn - rear wheels balances the center of gravity
- Very safe - DSS system maintains chair stability in every tilt position
- Easy to operate - light movement with smooth tilt
- Component Cross-Compatibility from the Invacare® family

Features and Options



Dahlia 30° for foot propelling with a seat height of 32,5 cm.



Dahlia 30° with self tilt for the user who can actively change posture.



Dahlia 45° for optimum pressure relief of the user's posterior.



The DSS with the high pivot point for the backrest which provides minimum shearing when reclining.

Features and Options



The first 10° of **Dahlia** 30° has a small incline for keeping the feet's as close to the ground as possible.



Pre-molded seats, or individually tailored seating is possible.



The **Matrx** can be selected as an option. It provides a stable and firm support to the body. The **Matrx Elite Deep** has a built-in trunk support and the **Matrx Elite** has a mild contour, which allows for more movement.



For a wider backrest on a smaller seat frame, seat width extension blocks are available.



Extend the seat plate for individual supports of seat cushions and/or legs.



Adjustable seating independent of depth and width.



Dahlia has an optional basic tension adjustable backrest.

The overall width is as small as an active chair. Note the proximity of the wheels. This makes it very easy to move through narrow spaces, such as doorways.



Dahlia can be equipped with a kerb lever.



On **Dahlia** 45 an additional gas piston helps the attendant to raise the chair from large tilt angles. This makes it easier for the attendant and helps reduce strain in the back.



The centre of gravity can be adjusted for lighter wheeling.



Anti tippers can be pushed up by the attendant's feet. These rest at a 5° outward position when folded down.

Technical data

For more comprehensive pre-sales information about this product, including the product's user manual, please see your local Invacare website.

	Seat width	Seat depth	Seat height	Backrest height	Armrest height	Length of footrests	Seat angle
<i>Rea Dahlia</i>	390-440/ 440-490/ 490-540 16" (390-490/ 440-540/490-590 mm)	430 - 500 mm	30° : 330 - 500 mm 45° : 350 - 500 mm	500 - 800 mm (without seat cushion)	250 - 320 mm	330 - 500 mm	30°: -1 - 30° 45°: 0 - 45°

	Backrest angle	Driving unit width	Total height	Total length inc. Footrests	Total weight	Max. user weight	Transport weight
<i>Rea Dahlia</i>	0° - 30°	SW + 160 mm (16") SW + 180 mm (24")	30°: 825 - 1250 mm 45°: 850 - 1250 mm	900 - 1180 mm	>35kg ¹	Max 135 kg	21/25 kg (SW 39 cm) ²

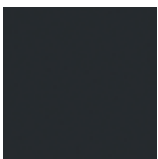
	Radius	Crash-tested	Maximum slope for use of parking brake	
<i>Rea Dahlia</i>	755 mm	Crash-tested ISO 7176-19	7°	<p>For options and accessories, see "Rea Accessory" brochure.</p> <ol style="list-style-type: none"> Overall weight in seat width 39 cm and with lightest configuration. The power tilt and Recline option adds 4,2 kg to the transport weight Transport weight increases with 4,2 Kg if the Power Tilt & Recline option is used.

Associated Logos



Frame colour

Black



Silver



Blue



Champagne



Red

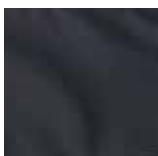


Petroleum Green



Upholstery

Black Dartex
TR26



Black plush
TR35



Please notice colors may vary slightly from those displayed above.



Scan here to access the website.

Tel: +41 (0)22 354 60 10
Fax: +41 (0)22 354 60 11
hqeurope@invacare.com
www.invacare.eu.com

Invacare International Sàrl
Route de Cité-Ouest 2 - 1196 Gland
Switzerland



Yes, you can.®

